

Product: <b>Programmable Speedometer</b>	<b>Description</b>  <b>Calibration Guide</b>	Date <b>March '10</b>
Type: <b>Electrical</b>		Issue <b>1</b>

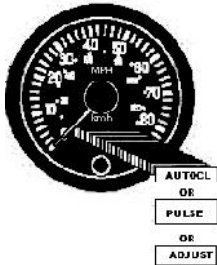
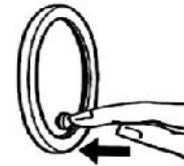
Calibration of the **VDO Programmable Speedometer** is a relatively simple procedure. To Calibration:

1. Your vehicle must be driven over a 1 mile markers or between a 1 mile course – either between highway mile makers or between a 1 mile stretch that you mark off with your family car.



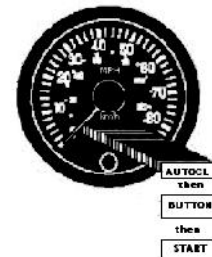
1Mile

2. Bring your vehicle to the beginning of the 1 mile course and shut off your ignition.
3. Hold in the odometer trip button and while holding it in, restart your engine.



4. The odometer window should say "AUTOCL". If it doesn't it will read "PULSE" or "ADJUST", as shown at left. If it reads "PULSE" or "ADJUST", hold in the button until "AUTOCL" appears in the window and then release the button.
5. In about 3 seconds, the word "AUTOCL" disappears and the word "BUTTON" appears.
6. Push the button again.

7. The word "BUTTON" disappears and the word "START" appears and flashes
8. Start driving toward the end of your marked course. You may drive at any speed you like. The word "START" will continue to flash and the pointer will stay on "0".
9. At the end of the mile course stop your vehicle if it is safe to do so. (If it is not safe to stop vehicle continue driving and proceed with instructions.)



**DO NOT SHUT OFF YOUR ENGINE!**

10. Push the button again.
11. The odometer window will show "P" with numbers after it. These are the pulses the sender produced over the mile you just drove.
12. The window will then switch to either the odometer reading or the trip odometer reading. You are finished calibrating your VDO Programmable speedometer.
13. To switch between the odometer and trip odometer, simply push the button.
14. To zero out the trip reading, hold the button for about 2 or 3 seconds.